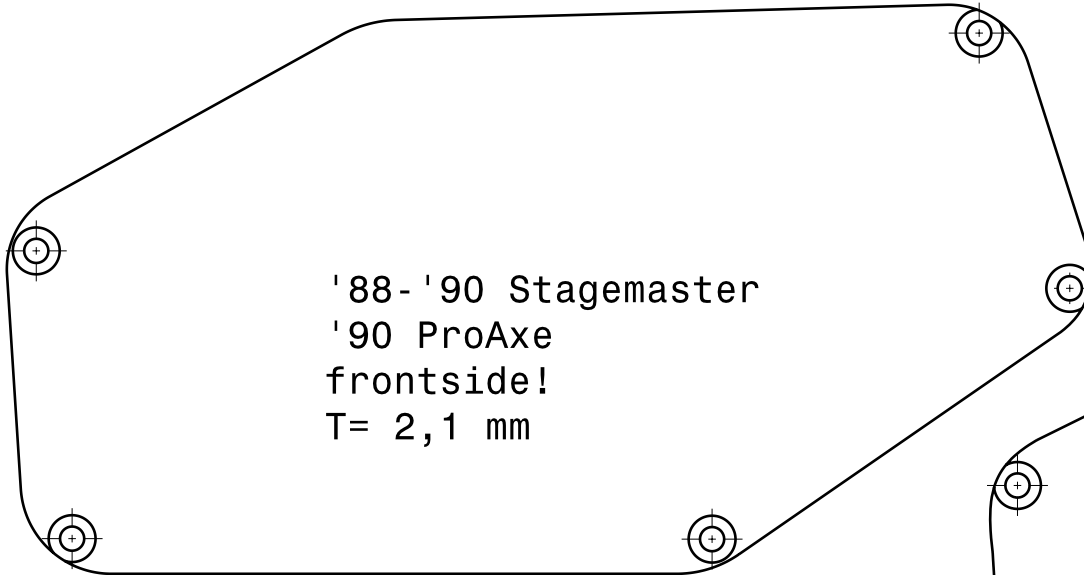


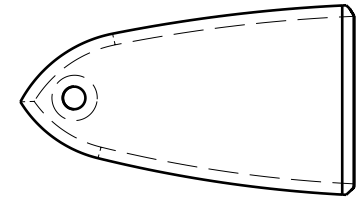
Pitchfork  
Walnut PU ring  
t= 4,2 mm



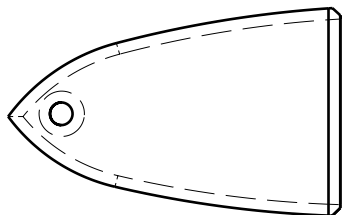
'91 Baretta III  
frontside!  
t= 2,2 mm



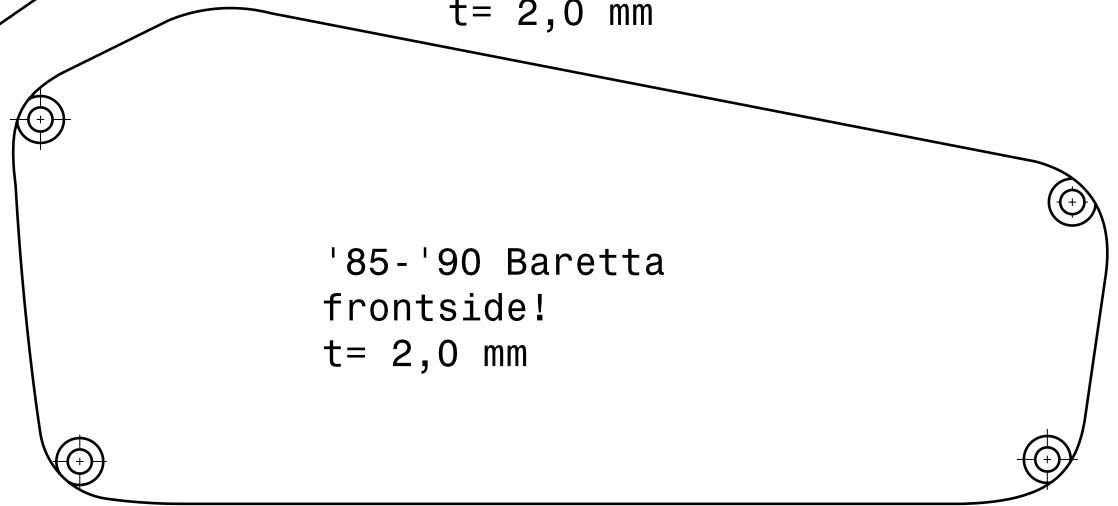
'88-'90 Stagemaster  
'90 ProAxe  
frontside!  
T= 2,1 mm



Standard trussrod cover  
backside  
t= 2,0 mm



Trussrod cover  
RS-sign. 'Japan only'  
Backside!  
t= 2,0 mm



'85-'90 Baretta  
frontside!  
t= 2,0 mm

200 mm

10"